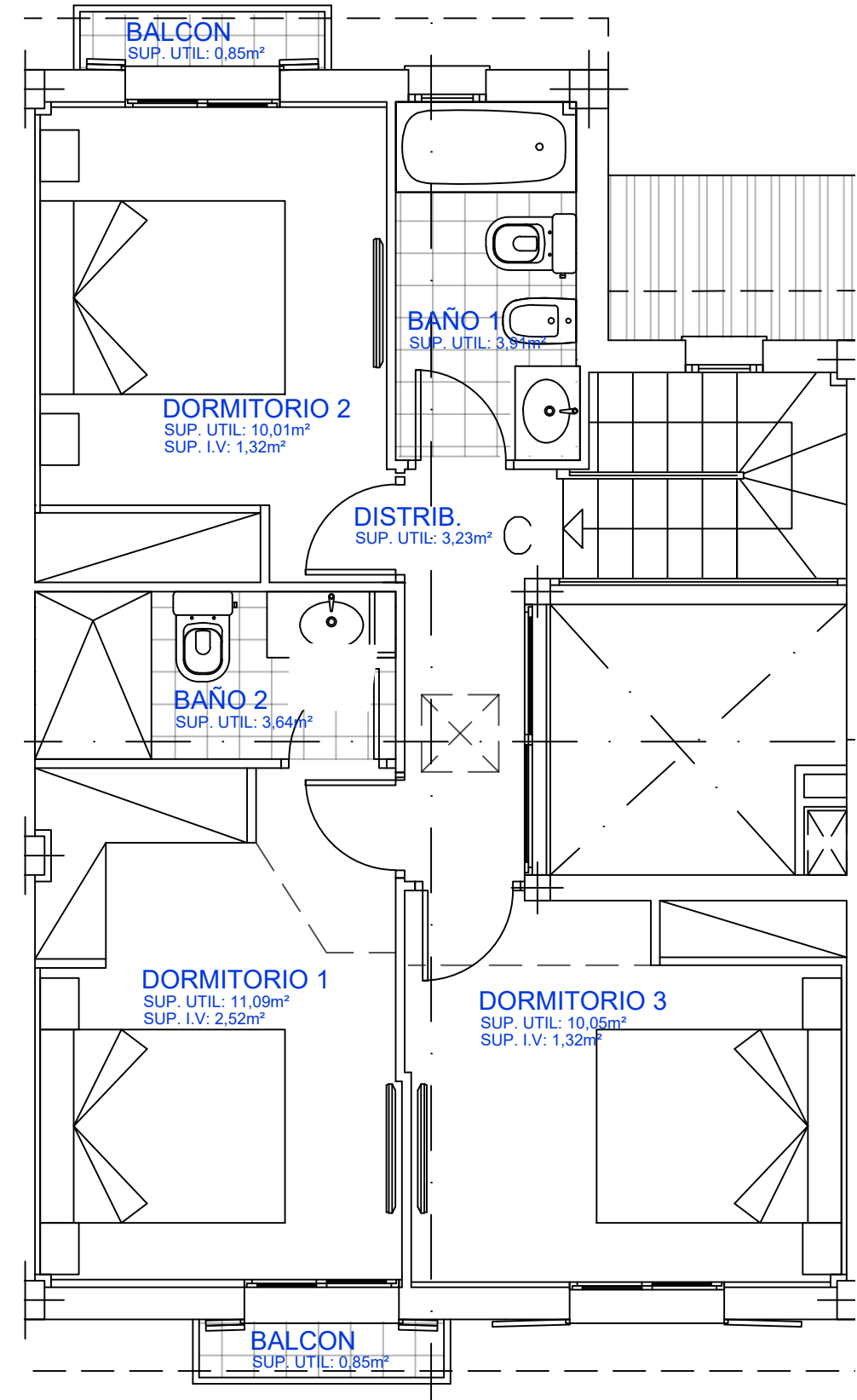
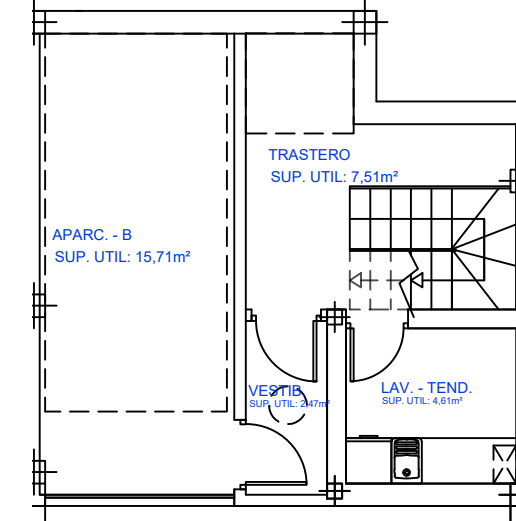


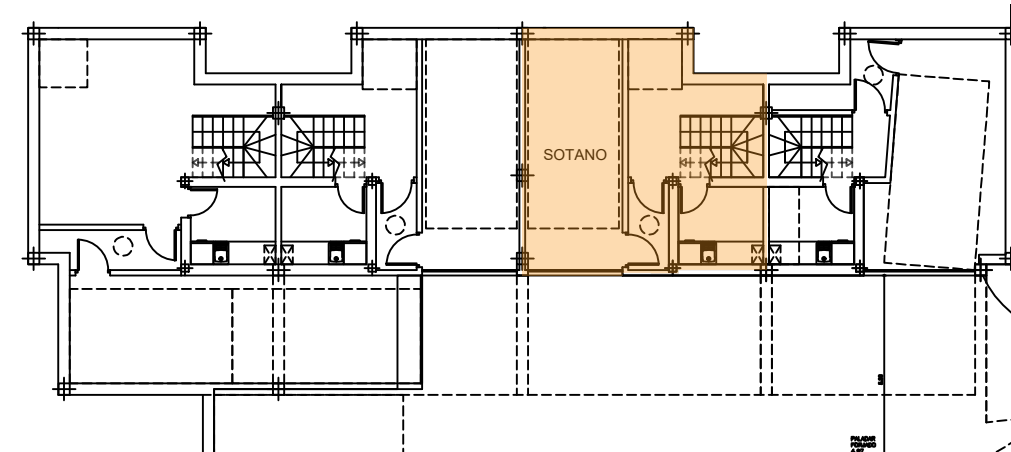
PLANTA BAJA



PLANTA ALTA

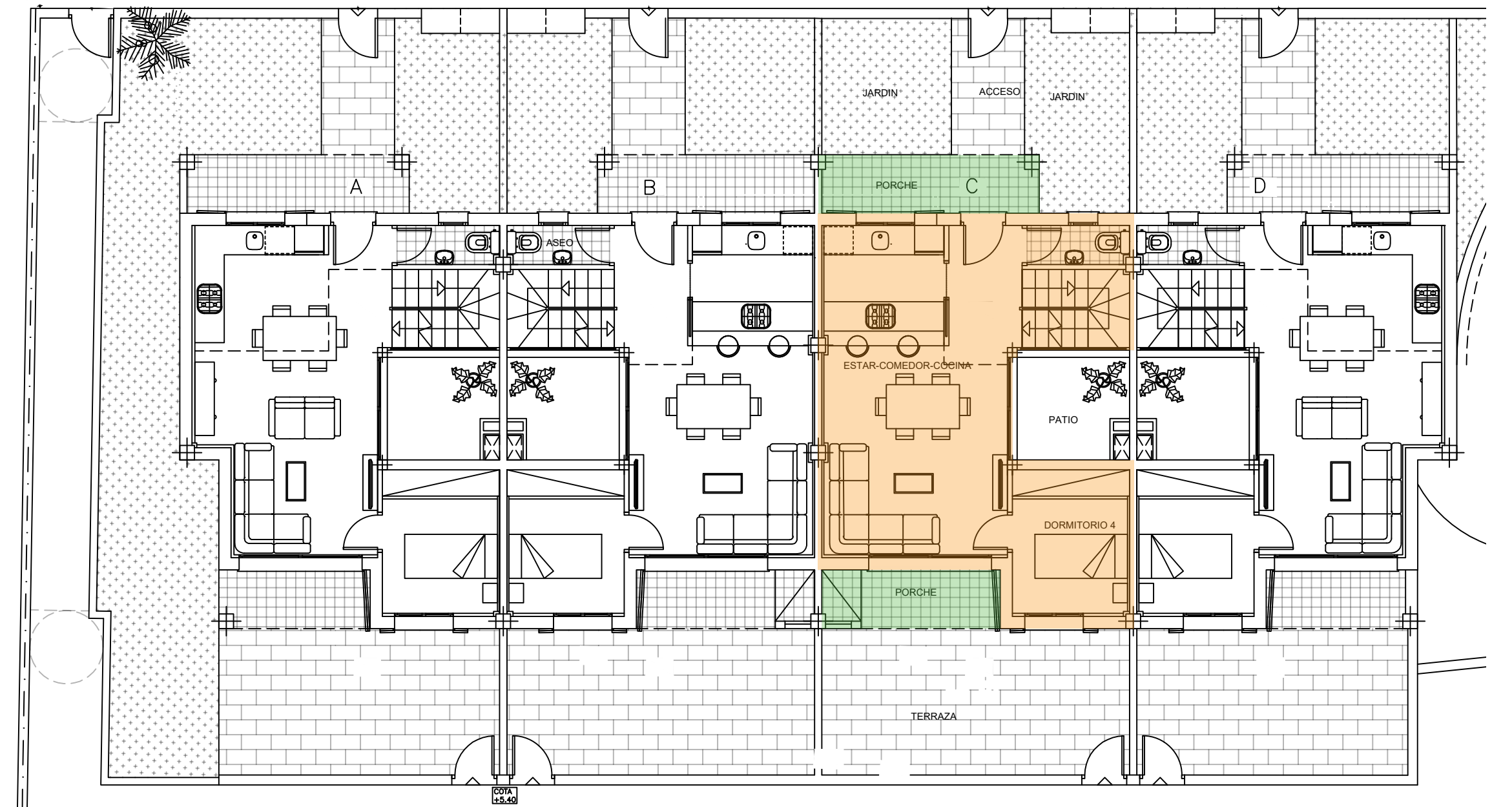


SOTANO - C

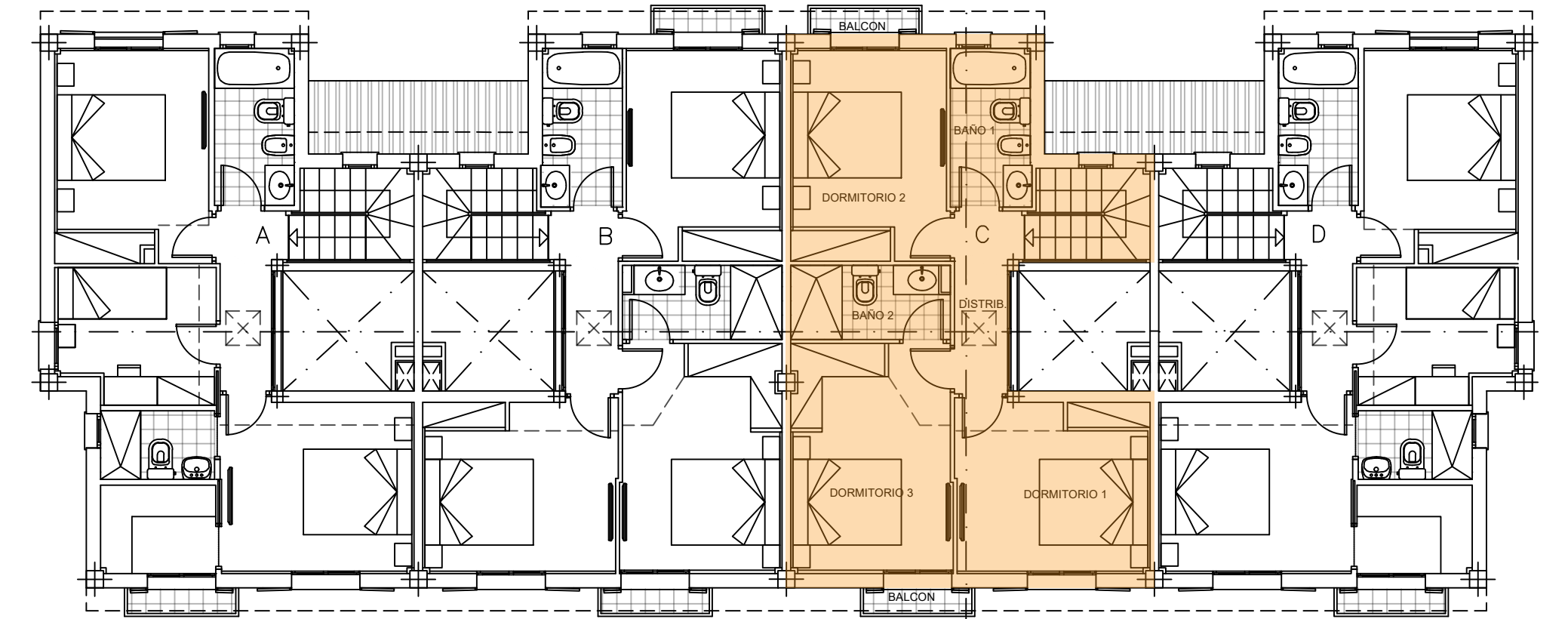


SOTANO - C

	SUP. ÚTIL VIV. C	
ESTAR - COMEDOR - COCINA	26,09 m ²	
DORMITORIO 1	11,09 m ²	
DORMITORIO 2	10,01 m ²	
DORMITORIO 3	10,05 m ²	
DORMITORIO 4	6,69 m ²	
DISTRIB.	3,23 m ²	
BAÑO 1	3,91 m ²	
BAÑO 2	3,64 m ²	
ASEO	1,68 m ²	
TOTAL SUP. ÚTIL	76,39 m²	
		SUP. TOTAL
SUP. ÚTIL EN TERRAZA	18,80 m ²	18,80 m ²
JARDINES	17,12 m ²	17,12 m ²
PATIO	4,49 m ²	4,49 m ²
ACCESO	4,18 m ²	4,18 m ²
BALCONES	1,70 m ²	1,70 m ²
		SUP. CONST.
SUPERFICIE CERRADA	97,66 m ²	97,66 m ²
PORCHE (50%)	4,84 m ²	9,68 m ²
SOTANO	39,48 m ²	39,48 m ²
TOTAL	102,49 m²	153,62 m²



PLANTA BAJA



PLANTA ALTA